



A showcase of the Swiss
ecosystem of microbiome
technologies

Third Edition, 5 February 2026

EPFL Rolex Learning Center - Forum

An event by the NCCR Microbiomes

Programme

14:00 Check-in and coffee

15:00 Welcome by NCCR Microbiomes

15:15 Session 1: Microbiomes in action

- Mickaël Bouvet (KPMG): *Live biotherapeutics products: successes and challenges ahead*
- Hanne Tytgat (Nestlé Research): *The microbiome as enabler of holistic health*
- Rita Di Martino (TIBIO): *Bacterial bioremediation: from lab-scale assessments to field applications*
- Benoît Guery (CHUV): *Fecal microbiota manipulation, are we there yet?*
- Roundtable with all speakers

16:25 Coffee break and booths exhibition

17:15 Session 2: The data side of the microbiome

- Camille Goemans (EPFL): *Producing and collecting microbiome data*
- Petar Scepanovic (Roche): *Translational implications of drug-microbiome interactions*
- Marco Meola (Databiomix): *The human gut microbiome as a diagnostic biomarker for nutrition and health*
- Christophe Dessimoz (UNIL & SIB): *Data infrastructure for one health: connecting microbiomes and pathogen surveillance*
- Roundtable with all speakers

18:25 Closing remarks followed by networking apéro and booths exhibition

We thank our supporters and sponsors:



Speakers



Mickaël Bouvet

Manager - KPMG

Mickaël Bouvet is a Life Sciences Strategy Manager at KPMG Zurich, specialising in biopharmaceuticals. He earned a PhD in virology from the University of Aix-Marseille in France, followed by postdoctoral research in immunology at the Helmholtz Zentrum in Munich, where he was awarded an EMBO fellowship. After returning to France, Mickaël began advising innovative companies on R&D funding strategies. He later completed an MBA at emlyon business school and relocated to Switzerland, where he now provides strategic advice and support to biopharma companies on commercial and operational topics. Combining his passion for science with strong business interest, Mickaël has also authored a white paper on the emerging live biotherapeutic products market.

[Personal page on LinkedIn](#)

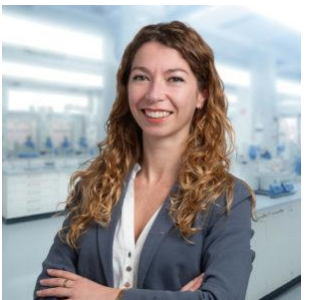


Christophe Dessimoz

Professor - UNIL · Director - SIB

Christophe Dessimoz is the executive director of SIB Swiss Institute of Bioinformatics and Professor at the University of Lausanne. During his tenure, SIB launched the Centre for Pathogen Bioinformatics, which offers expertise and services in pathogen bioinformatics, computational molecular epidemiology, and multi-site project management to Swiss Federal Authorities and within global pandemic preparedness and molecular surveillance programs. His research group focuses on molecular evolution and comparative genomics. (photo: Nicolas Righetti/Lundi13)

[Lab website](#)



Rita Di Martino

Head of Biology - TIBIO

Rita Di Martino is a microbiologist and Head of Biology at TIBIO. She earned a PhD in Life Science at the University of Lausanne in 2022, focusing on interspecies interactions within microbial communities. She joined TIBIO in 2023, a Swiss biotechnology company specialised in scientific consulting and the creation of solutions for environmental pollution. In her current role, she oversees R&D projects and develops customised systems for bioremediation, agrochemistry, and the food industry.

[TIBIO.ch](#)



Camille Goemans

Professor - EPFL

Camille Goemans obtained her PhD at the UCLouvain, Belgium, where she studied bacterial stress responses at the molecular level in the laboratory of Jean-François Collet. She next moved to EMBL for a postdoc with Nassos Typas, studying the impact of antibiotics on the human gut microbiota. Camille started her lab at EPFL in September 2023 and her research focuses on antibiotics, antibiotic resistance, and human gut microbes.

[Lab website](#)

**Benoît Guery**

Professor - CHUV

Benoît Guery is an Associate Professor of Infectious Diseases at the University Hospital of Lausanne. He is board-certified in pneumology, intensive care, and infectious diseases. Previously, he held the position of full professor of infectious diseases in France before transitioning to his current role as an associate professor in Lausanne in 2016. Pr. Guery is also responsible for overseeing the general infectious diseases consultation at the hospital. Dr. Guery's research focuses on two main areas: Clostridioides difficile infection and microbiota dynamics. His work encompasses both basic and clinical research. In the context of C. difficile infection, he has been actively involved in several clinical trials to evaluate the efficacy of various drugs. He has a significant interest in fecal microbiota transplantation and is currently participating in multiple clinical trials to further our understanding of CDI infection.

[Lab website](#)

**Marco Meola**

CEO & Founder - DATABIOMIX

Marco Meola is a molecular biologist, microbial ecologist, and bioinformatician with expertise in microbiomics and metagenomics. He obtained his PhD in Environmental Microbiology from ETH Zurich in 2015 and subsequently worked as a scientist at Agroscope Liebefeld, the University Hospital Basel, and the Institute of Medical Microbiology at the University of Zurich. In 2025, he founded DATABIOMIX, a techbio startup based at the Biotechnopark Schlieren. The company harnesses the predictive power of the human gut microbiome to develop innovative diagnostic tools using microbiota-derived biomarkers for applications in nutrition and health.

[DATABIOMIX.com](#)

**Petar Scepanovic**

Principal Scientist - Roche

Petar Scepanovic is a scientist specialising in the integration of omics technologies and advanced statistical modelling to investigate complex human diseases and the microbiome. With a strong entrepreneurial mindset, Petar applies data-driven approaches across multiple therapeutic areas, exploring the interplay between microbiome and genetics. He is based within the Predictive Modelling and Data Analytics chapter of Roche's Pharma Research and Early Development (pRED) unit.

[Personal page on LinkedIn](#)

**Hanne Tytgat**

Group Lead - Nestlé

Hanne Tytgat obtained a PhD in Bioscience Engineering from University of Leuven (BE). She worked as a postdoctoral researcher at University of Wageningen (NL) and ETH Zurich (CH). Hanne is a microbial glycobiologist and focuses on elucidating the role of glycans in microbiota-host interactions. In her current role at Nestlé Research, Hanne is leading the digestion & absorption group and leverages her expertise to understand how dietary glycans affect development and health for nutritional applications.

[Personal page on LinkedIn](#)

About the Organizer

NCCR Microbiomes



The National Center of Competence in Research (NCCR) [Microbiomes](#), was launched in 2020 to understand the unifying principles of microbiome functioning, to develop tools to diagnose microbiome status, and to devise strategies to intervene and restore imbalanced microbiomes. This research consortium gathers more than 100 scientists across Switzerland, from the University of Lausanne, ETH Zurich, EPFL, CHUV, the University of Bern, and the University of Zurich. NCCR Microbiomes is funded by the Swiss National Science Foundation for a period of 12 years.

The NCCR Microbiomes brings together a unique and interdisciplinary research program with experimental and clinical microbiome studies. Its scope encompasses microbial communities in human, animals, plants, as well as in natural and industrial environments.

One of our goals as an NCCR is to translate new knowledge obtained by fundamental research into concrete interventions that ultimately will have impact on clinicians, veterinarians, farmers, water utilities, healthcare, and the food industry.

The Venue

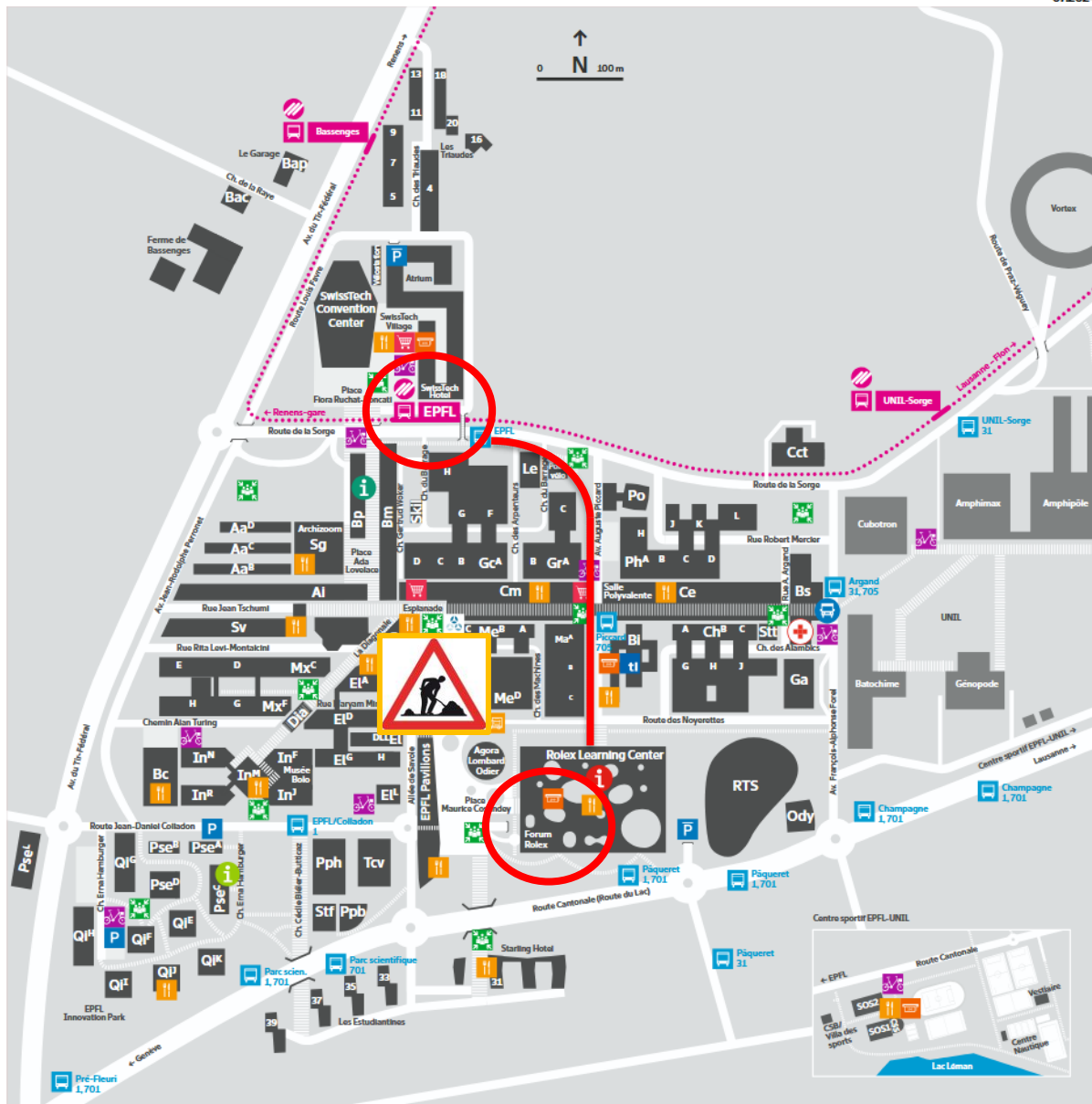
EPFL Rolex Learning Center



The building is accessible to people with reduced mobility. Adapted ramps, a lift platform and a stair lift allow visitors to negotiate the various slopes of the building.

<https://www.epfl.ch/campus/visitors/buildings/rolex-learning-center/building/access/>

072024



5